




# CROSSMAX™ XL

Use : **Use only on an MTB equipped with a rim braking system.** Any other use (such as on a tandem, road bike, cyclo-cross bike...) is highly inadvisable, and is the sole responsibility of the user, which voids the Mavic® warranty.

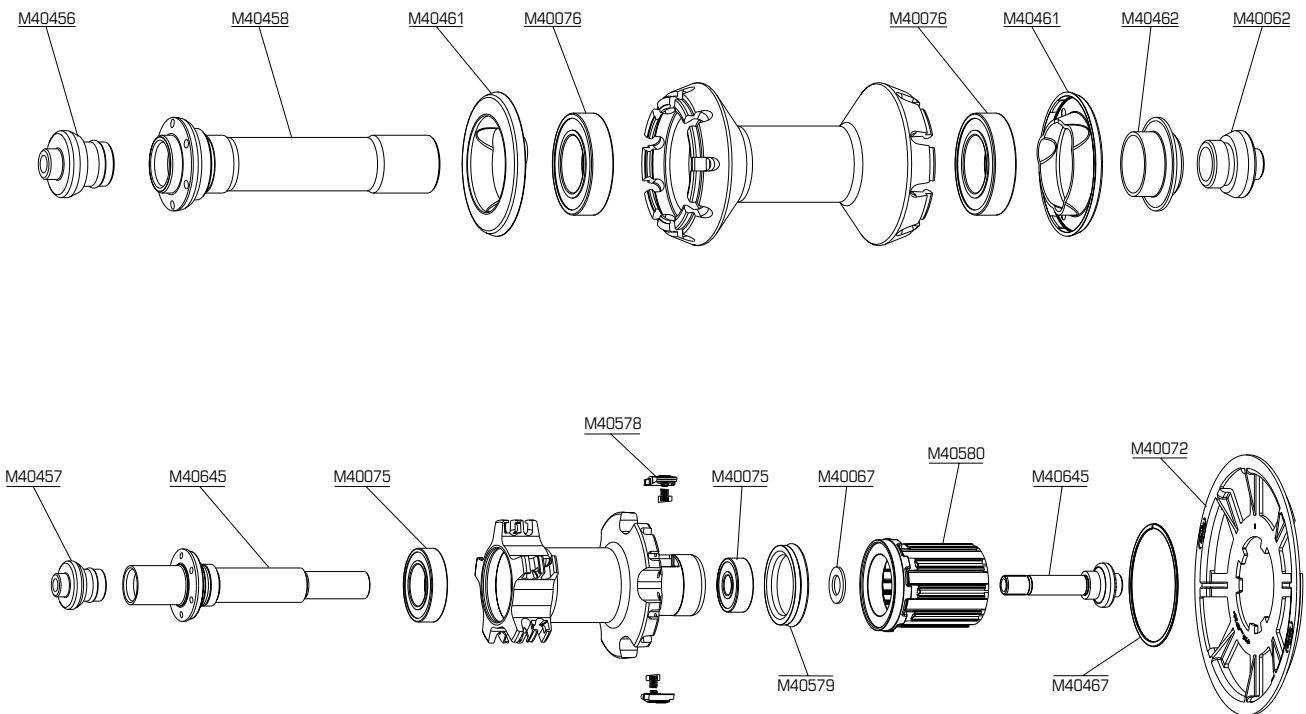
WHEEL WEIGHT WITHOUT SKEWER :  
FRONT : 730 g.  
REAR : 885 g.

REF. WHEEL :  
FRONT : M25200  
REAR : M25201  
PAIR : M29085

## RIM

COMMERCIAL REFERENCES	VALVE HOLE Ø	RECOMMENDED TIRE WIDTH AND PRESSURE
Front : M40725 Rear : M40726  Do not use rim tape	 Ø : 6,5 mm UST valve M40495 Presta with Schrader adapter Length: ≥ 32 mm	 Dimensions: Ø 26' ETRTO compatible 559 x 19 Recommended tire width: 1,5 - 2,3   Recommended tire pressure: See page 6

## HUBS



**MAINTENANCE:** Clean with a dry cloth or soap and water. Do not use pressurized water.

Caution : The parts on the FTS-L free wheel (pawl assembly, springs, free wheel body) are not compatible with those on the FTS free wheel.

## WHEEL BUILDING

<b>FEATURES :</b>	Round Zical spokes with anti-rotation system. Integrated nipples with brake ring (self-locking)	<b>LACING PATTERN :</b>	Front : radial Rear : Isopulse concept
<b>REFERENCE :</b>	Front : M40727 length 255 mm (per 9) Rear CRL : M40729 length 245 mm (per 10) Rear ORL : M40731 length 274 mm (per 10)	<b>TENSION :</b>	Front : 120 - 130 kg Rear free wheel side : 130 - 140 kg

## ACCESSORIES

### WHEEL DELIVERED WITH :

- Front Mavic BX601 quick release skewer: M40140
- Rear Mavic BX601 quick release skewer: M40141
- Chain Disc (with rear wheel) : M40072
- Free play adjustment wrench (with rear wheel) : M40123

- UST valve : M40495
- Spoke tension and maintenance wrenches (with rear wheel) : M40494
- Instructions and warranty card

## MAINTENANCE

- |                                 |             |                               |             |
|---------------------------------|-------------|-------------------------------|-------------|
| • Replacing the front axle:     | See page 17 | • Replacing the rear bearings | See page 22 |
| • Replacing the front bearings  | See page 17 | • Replacing the spokes        | See page 24 |
| • Replacing the rear axle       | See page 19 | • Replacing the front rim     | See page 27 |
| • Replacing the free wheel body | See page 21 | • Replacing the rear rim      | See page 28 |