

DEEMAX® UST

Use : **Use only on an MTB equipped with disc brakes.** Any other use (such as on a tandem, road bike, cyclo-cross bike,...) is highly inadvisable, and is the sole responsibility of the user, which voids the Mavic® warranty.

WHEEL WEIGHT WITHOUT SKEWER :

FRONT : 1075 g.

REAR : 1235 g.




REF. WHEEL :

FRONT : M24800

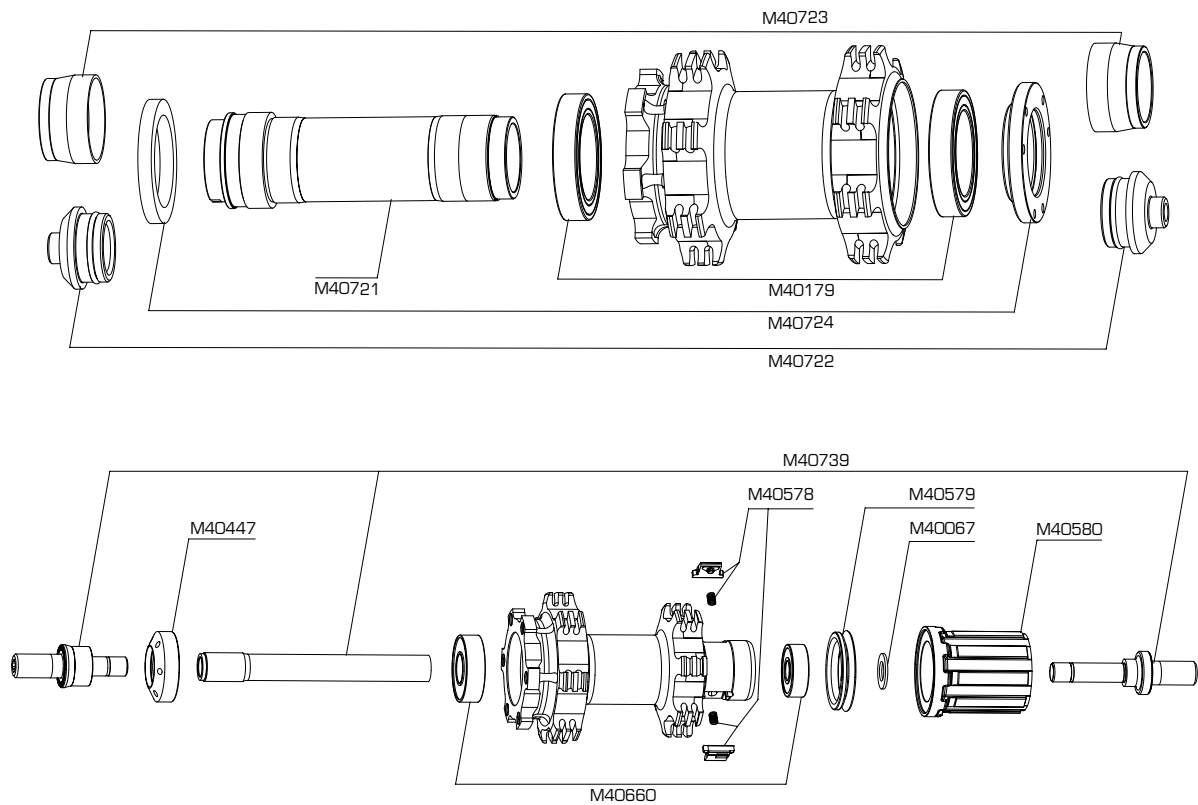
REAR : M24801

PAIR : M29091

RIM

COMMERCIAL REFERENCES	VALVE HOLE Ø	RECOMMENDED TIRE WIDTH AND PRESSURE
<p>Front and rear : M40734 Delivered with screw-on eyelets</p> <p>Do not use rim tape</p>	 <p>Ø : 6,5 mm UST valve M40495 Presta with Schrader adapter Length: ≥ 32 mm</p>	 <p>Dimensions: Ø 26' ETRTO compatible 559 x 23 Recommended tire width: 2,00 - 2,8</p>  <p>Recommended tire pressure: See page 6</p>

HUBS



MAINTENANCE: Clean with a dry cloth or soap and water. Do not use pressurized water.

Caution : The parts on the FTS-L free wheel (pawl assembly, springs, free wheel body) are not compatible with those on the FTS free wheel.

WHEEL BUILDING

FEATURES :	2.3 - 2.0 straight pull stainless steel spokes with ABS type of nipples (self-locking) Screw-on eyelets delivered with the rim	LACING PATTERN :	Front : radial Rear: Isopulse concept
REFERENCE :	Front and rear : M40735 length 276 mm (per 14)	TENSION :	Front disc side : 120 - 130 kg Rear free wheel side : 120 - 130 kg

ACCESSORIES

WHEEL DELIVERED WITH :

- 9 mm axle adapters : M40722
- 20 mm axle adapters : M40723
- UST valve M40495

- Free play adjustment wrench : M40123 (with rear wheel)
- Instructions and warranty card
- Axle nuts (rear wheel) : M40740

MAINTENANCE

- | | | | |
|---------------------------------|-------------|-------------------------------|-------------|
| • Replacing the front axle | See page 18 | • Replacing the rear bearings | See page 22 |
| • Replacing the front bearings | See page 18 | • Replacing the spokes | See page 23 |
| • Replacing the rear axle | See page 20 | • Replacing the front rim | See page 25 |
| • Replacing the free wheel body | See page 21 | • Replacing the rear rim | See page 26 |