




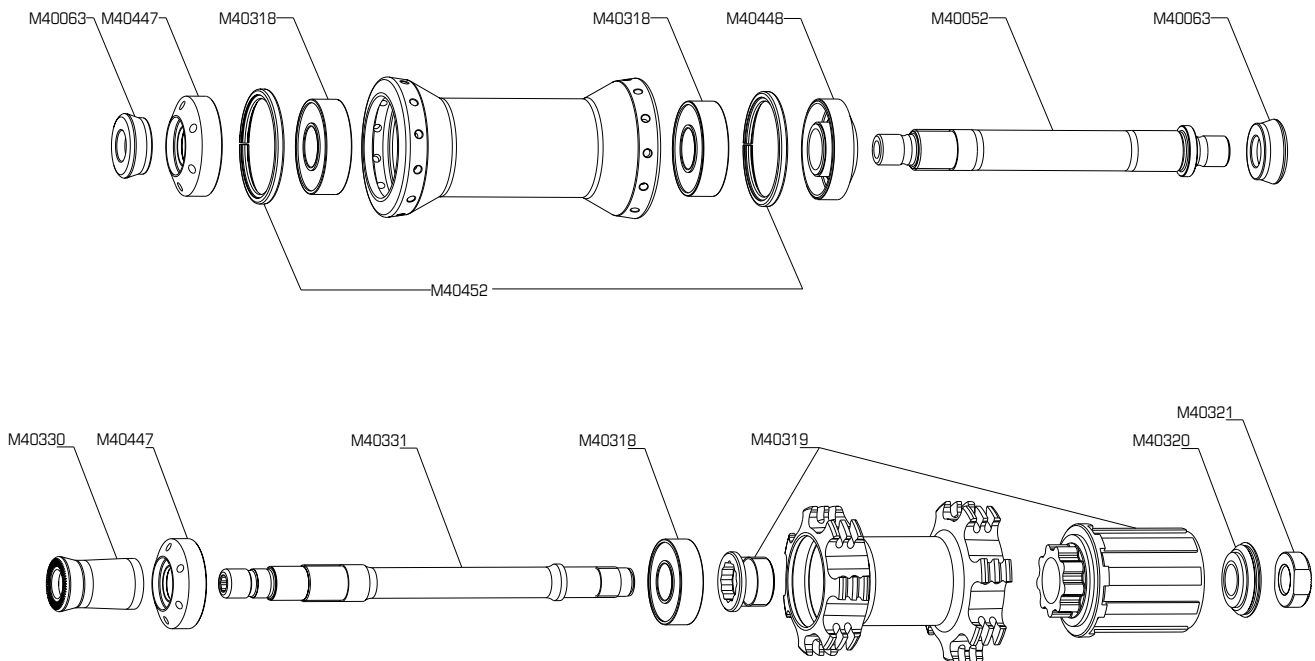
Use : To be used on a cross country mountain bike only. Any other use (such as on a tandem, in downhill disciplines...) is inadvisable and is the sole responsibility of the user, which voids the Mavic warranty.

WHEEL WEIGHT WITHOUT SKEWER :
 FRONT : 740 g.
 REAR : 1030 g.
 WHEEL REFERENCE :
 FRONT : M24200.
 REAR : M 24201.

RIM

COMMERCIAL REFERENCES	Ø VALVE HOLE	RECOMMENDED TIRE WIDTH AND PRESSURE	MAINTENANCE AND BRAKES
Front : M40633 Rear : M40635		 Ø 26" : Compatible ETRTO 559 x 17	Maintenance : see page 28. Brakes : see page 29.
Available through the MSC.	Ø 8,5 mm Ø 6,5 mm with valve reducer M40381.	 See page 4.	Replacing the rim : see 2000 Technical Manual, pages 17 & 18.

HUBS



MAINTENANCE : Cleaning : Use a dry cloth or soap and water.
 Do not use pressurized water. Maintenance : see page 15 and 2000 technical Manual, pages 10 - 14.

WHEEL BUILDING

FEATURES	TENSION	MAINTENANCE
<p>QUANTITY PER PACKAGE : 10 spokes + 10 nipples.</p> <p>NIPPLES : Nickel plated brass, spherical head, 14 mm.</p> <p>SPOKES : Length and reference : Front : 255 mm / M40208 Rear : 275 mm / M40207.</p> <p>LACING PATTERN : Front : radial Rear : 3 cross pattern.</p>	<p>Front and right rear : 70 - 90 kg.</p> <p>90 - 110 divisions (Hozan tensionmeter).</p>	<p>Lateral and radial truing : see page 20.</p> <p>Replacing the spokes : see 2000 technical Manual, pages 16 and 18.</p>

ACCESSORIES

WHEEL DELIVERED WITH :

- Front quick release skewer : M40350.
- Rear quick release skewer : M40352.
- Rim tape 20 x 559 mm, 0,6 mm thick : M40104
- Free play adjustment wrench : M40123.
- Instructions and warranty card.