

## FRONT BEARING KIT FOR CROSSRIDE®, CROSSMAX® UST®, COSMOS®, KSYRIUM® AND COSMIC® CARBONE SSC® WHEELS.

### TOOLS NEEDED

- 1 x 5 mm Allen wrench.
- 1 x 10 mm Allen wrench.
- 1 hub wrench M40123.

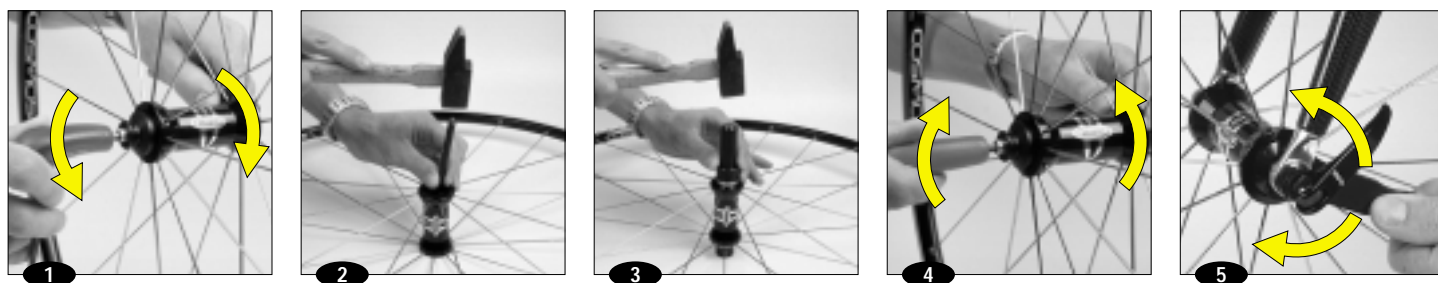
Bearing pullers :

- M40373 for Crossride® and Cosmos® wheels.
- M40119 for Crossmax® UST® and Ksyrium® SSC® wheels.
- M40120 for Cosmic® Carbone SSC® wheels.

Replacing the bearing :

- 1 Disassemble the axle kit (see page 11).
- 2 Remove the hub body bearings with the bearing pullers.
- 3 After cleaning the body, install the new bearings with the appropriate bearing tool.
- 4 Install the axle kit (see page 11).
- 5 Adjust the bearing free play (install the wheel to the frame and put the bike down on the floor) : the adjuster nut contacts the external side of the bearing with the hub wrench M40123.

Repeat this operation if the adjustment doesn't seem to be optimum.



## REAR BEARING KIT FOR CROSSRIDE® AND COSMOS® WHEELS.

### TOOLS NEEDED

- 1 x 5 mm Allen wrench.
- 1 x 16 mm wrench.
- 1 hub wrench M40123.
- Bearing pullers M40373.

- 1 Disassemble the axle kit (see page 12).
- 2 Remove the hub body bearings with the bearing pullers.
- 3 After cleaning the body, install the new bearing with the bearing tool.
- 4 Install the axle kit (see page 12).
- 5 Adjust the bearing free play (install the wheel to the frame and put the bike down on the floor) : the adjuster nut contacts the external side of the bearing with the hub wrench M40123.

Repeat this operation if the adjustment doesn't seem to be optimum.

