

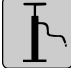
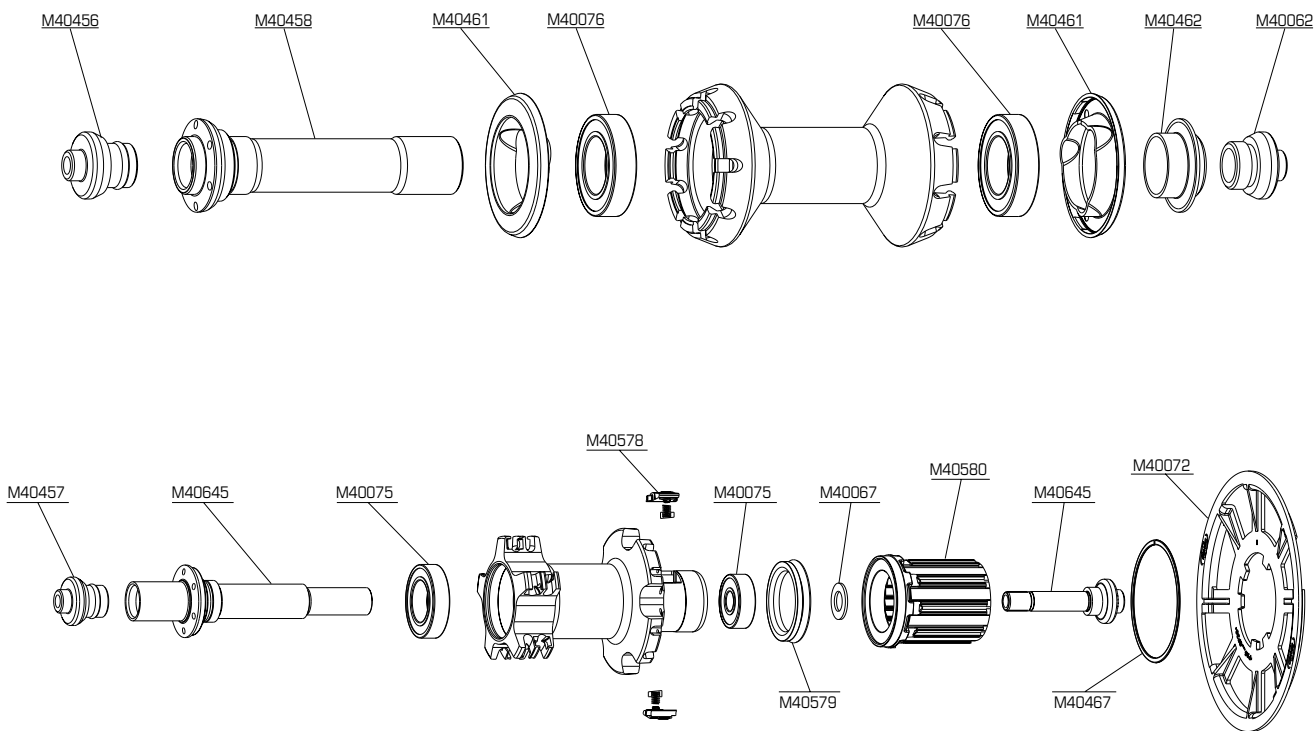


WHEEL WEIGHT WITHOUT SKEWER :
 FRONT : 710 g.
 REAR : 870 g.
 WHEEL REFERENCE :
 FRONT : M23300.
 REAR : M23304.

Use : **To be used only with Tubeless UST® tires on a cross country mountain bike.** The use of any other tire or any other use (such as on a tandem, in downhill disciplines...) is inadvisable and is the sole responsibility of the user, which voids the Mavic warranty.

RIM			
COMMERCIAL REFERENCES	Ø VALVE HOLE	RECOMMENDED TIRE WIDTH AND PRESSURE	MAINTENANCE AND BRAKES
Front : M40470 Rear : M40471	 Valve UST® M40495 Ø 6,5 mm or Ø 8,5 mm with adapter.	 Ø 26" : Compatible ETRTO 559 x 19 Tubeless UST® only.  2 - 4 bars (30 - 60 PSI). Tubeless UST® only.	Maintenance : see page 28. Brakes : see page 29. Replacing the rim : see 2000 Technical Manual, pages 19 & 20.
Available through the MSC.			

HUBS



MAINTENANCE : Cleaning : Use a dry cloth or soap and water.
 Do not use pressurized water. Maintenance : see pages 15, 17, 18 & 19.
Caution : the parts on the free wheel (pawl assembly, springs, free wheel body) FTS L (2001 version) are not compatible with those on the FTS free wheel (2000 version).

WHEEL BUILDING

FEATURES	TENSION	MAINTENANCE
QUANTITY PER PACKAGE : 10 Zicral spokes with anti-rotation system. SPOKES : Length and reference : Front : M40482. Right Rear : M40483. Left Rear : M40484. LACING PATTERN : Front : radial. Right Rear : radial, Isopulse system. Left Rear : 3 cross pattern, Isopulse system.	Front : 100 - 120 kg. Right rear : 130 - 150 kg.	Lateral and radial truing : see page 20. Replacing the spokes : see 2000 Technical Manual, pages 17 & 18.

ACCESSORIES

WHEEL DELIVERED WITH :

- Front quick release skewer Mavic BX 601 Composite : M40140.
- Rear quick release skewer Mavic BX 601 Composite : M40141.
- Chain Disc : M40072.
- Free play adjustment wrench : M40123.
- Valve UST® : M40495.
- Spoke maintenance and tension wrenches (delivered with the rear wheel) : M40494.
- Instructions and warranty card.