


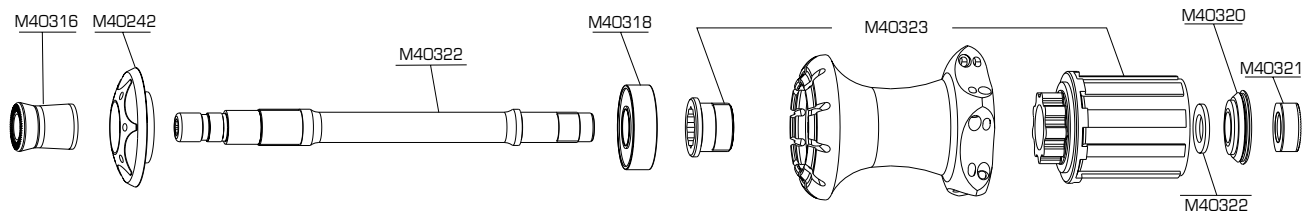
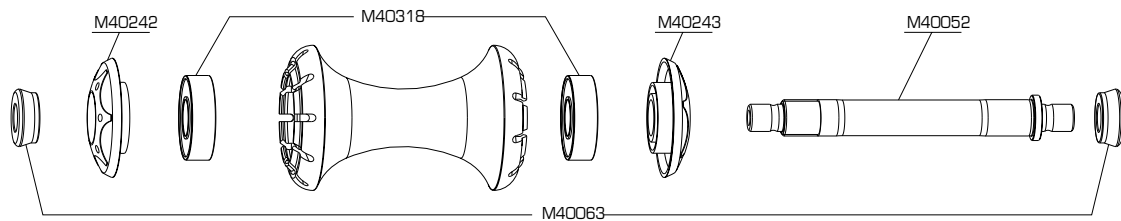


Use : To be used only on a road bike. Any other use (such as on a tandem, mountain bike...) is inadvisable and is the sole responsibility of the user, which voids the Mavic warranty.

<b>WHEEL WEIGHT WITHOUT SKEWER :</b> FRONT : 880 g. REAR : 1095 g. <b>WHEEL REFERENCE :</b> FRONT : M24100. REAR : M24101.
---

RIM			
COMMERCIAL REFERENCES	Ø VALVE HOLE	RECOMMENDED TIRE WIDTH AND PRESSURE	MAINTENANCE AND BRAKES
Front / Rear : M40604	 Ø 6,5 mm L ≥ 32 mm.	 Ø 700 : Compatible ETRTO 622 x 13 (clincher). Width : see page 4.  See page 4.	Maintenance : see page 28. Brakes : see page 29. Replacing the rim : see 1999 Technical Manual, pages 49 & 50.
Available through the MSC.			

## HUBS



**MAINTENANCE :** Cleaning : Use a dry cloth or soap and water.

Do not use pressurized water. Maintenance : see page 15 and 1999 Technical Manual, pages 38, 40, 43, 44 & 45.

## WHEEL BUILDING

FEATURES	TENSION	MAINTENANCE
<b>QUANTITY PER PACKAGE :</b> 10 spokes + 10 nipples. <b>NIPPLES :</b> Nickel plated brass, spherical head, 18 mm. <b>SPOKES :</b> Length and reference : Front : 281 mm / M40606. Right Rear : 300 mm / M40607. Left Rear : 283 mm / M40608. <b>LACING PATTERN :</b> Front / Rear : 3 cross pattern.	Front / Right rear : 80 - 100 kg. 90 - 100 divisions (Hozan tensionmeter).	Lateral and radial truing : see page 20. Replacing the spokes : see 1999 Technical Manual, page 49 and 50.

## ACCESSORIES

**WHEEL DELIVERED WITH :**

- Front quick release skewer : M40350.
- Rear quick release skewer : M40351.
- Rim tape 16 x 622 mm, 0,6 mm thick : M40107.
- Free play adjustment wrench : M40123.
- Instructions and warranty card.