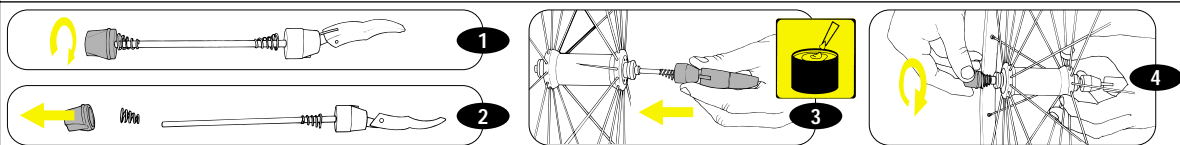
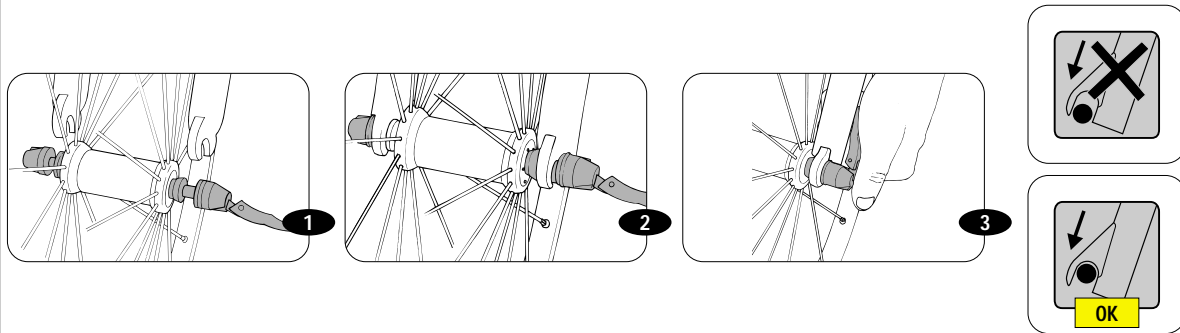


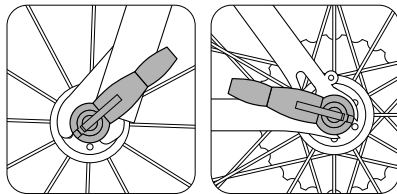
## ASSEMBLING THE SKEWER



## INSTALLATION



## ADJUSTING THE SKEWER



If the skewer lever can be manipulated easily in the CLOSED position, the force holding the wheel is insufficient.

Therefore, put the skewer lever in the OPEN position and tighten the adjustment nut to increase the closure force.

Push the skewer lever to the CLOSED position.

If the closure force is excessive, the lever cannot be put in the CLOSED position.

Put the skewer lever in the OPEN position and loosen the adjustment nut to reduce the closure force.

Push the skewer lever to the CLOSED position.

Adjust the nut to allow the skewer lever to be CLOSED with a strong force.