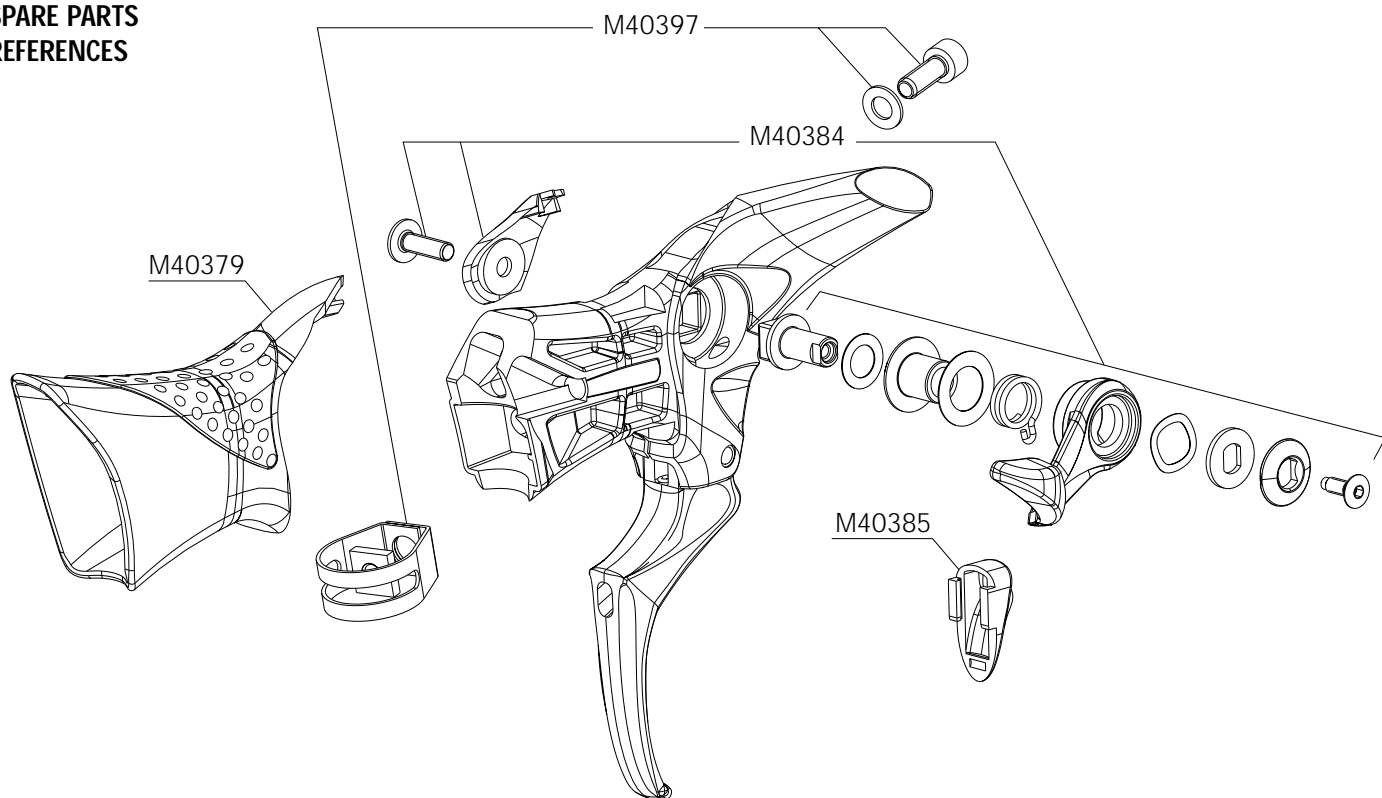


## LEFT LEVER

M40380. WEIGHT : 205 g.

### SPARE PARTS REFERENCES



### MAINTENANCE

#### TOOLS NEEDED :

- 1 phillips screwdriver. / • 1 x 3 mm Allen wrench adaptor. / • PTFE grease only. / • 1 ball-point pen.

#### Retrofriction mechanism :

- 1 Roll back the front of the cover.
- 2 From the inside of the lever, loosen the retrofriction mechanism fixing bolt using a phillips screwdriver and 3 mm Allen wrench adaptor.
- 3 Disassemble the mechanism and clean it with a dry cloth.
- 4 Grease the thin washers at both ends of the cylinder as well as the spring.
- 5 Install the unit following the order of the parts described in the drawing above.
- 6 Tighten the retrofriction mechanism at about 1 Nm / 9 In.l.BS using a phillips screwdriver and the 3 mm Allen wrench adaptor until the desired smoothness of the retrofriction is obtained.
- 7 Put the cover lock back on inside the lever using a ball point pen.

### TROUBLESHOOTING

#### TOOLS NEEDED :

- 1 dynamometric screwdriver./ • 1 - 3 mm Allen wrench adaptor./ • 1 - 4 mm Allen wrench./ • 1 - 5 mm Allen wrench.

#### Replacing the retrofriction mechanism.

- 1 Roll back the front of the cover.
- 2 On the outside of the lever, loosen the retrofriction mechanism fixing bolt using a dynamometric screwdriver and a 3 mm Allen wrench adaptor.
- 3 Replace the entire retrofriction mechanism.
- 4 From the outside of the lever, tighten the unit using a dynamometric screwdriver and 3 mm Allen wrench adaptor. **Torque: 1 N.m.**

#### Replacing the front derailleur cable.

- 1 Loosen the cable tightening screw with the 5 mm Allen wrench.
- 2 Remove it, or if this is not possible, disassemble the retrofriction mechanism (see above) having previously put the retrofriction lever at 90° to the lever.
- 3 Replace the cable (see installation paragraph) and mount, if necessary, the retrofriction mechanism (see above).

#### Replacing the fixing collar.

- 1 Loosen the collar with the 4 mm Allen wrench.
- 2 Replace it and insert it inside the hole of the lever.

#### Make sure the collar is mounted in the proper direction.

- 3 Tighten the collar with the 4 mm Allen wrench. **Torque : 7 - 9 N.m.**