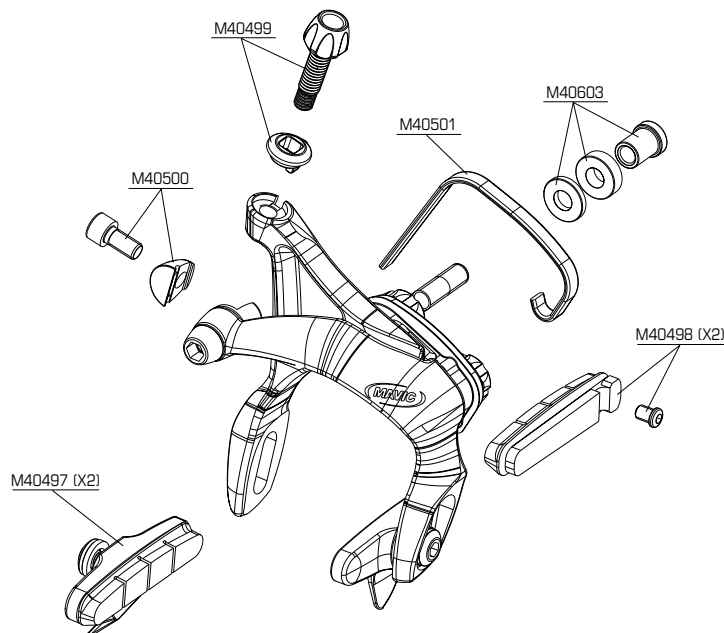


## REFERENCES OF SPARE PARTS



## MAINTENANCE

**TOOLS NEEDED :** • 1 x 5 mm Allen wrench. / • 1 x 4 mm Allen wrench. / • 1 x 2.5 mm Allen wrench. / • Grease

**For all the following operations, we recommend removing both wheels from the bike.**

### REPLACING THE SPRING :

- 1 Remove the brake caliper from the frame using the 5 mm Allen wrench.
- 2 Unclip the spring by depressing the rectilinear part of the spring.
- 3 Replace the spring.
- 4 Insert the new spring in the caliper by first inserting the spring hook and finishing with the rectilinear part. (to be inserted behind the caliper pin).
- 5 Make sure the spring is well-placed by manipulating the caliper 10 times.
- 6 Install the caliper on the frame using the 5 mm Allen wrench and center it using the 5 mm Allen Wrench and 14 mm flat wrench (see mounting instructions).

### REPLACING THE CABLE CLAMP KIT :

- 1 Loosen the cable clamp screw using the 4 mm Allen wrench.
- 2 Replace the cable clamp and the screw.
- 3 Put grease on the cable clamp screw thread.

**Caution : do not put grease on the cable clamp groove.**

- 4 Install the cable clamp and cable clamp screw unit by passing the brake cable in the proper place.
- 5 Adjust the tension of the cable and tighten the cable clamp screw using the 4 mm Allen wrench (see mounting instructions). **Torque : 7 - 9 Nm.**

### REPLACING THE BRAKE PAD SET / BRAKE SHOES :

- 1 Loosen the brake shoe screw using the 4 mm Allen wrench.
- 2 Loosen the brake pad screw using the 2.5 mm Allen wrench.
- 3 Replace the brake pad.

**Caution : make sure the brake pad corresponds to the brake shoe (left brake pad/ right brake pad).**

- 4 Install the brake pad in the brake shoe and tighten the brake pad screw using the 2.5 mm Allen wrench.

**Torque : 0.8 Nm.**

- 5 Install the brake shoe on the caliper with the support washer under the head of the screw.

- 6 Place the brake shoe in the proper position in relationship to the braking area on the rim and tighten the screw using the 4 mm Allen wrench.

**Torque : 4 - 6 Nm.**

### REPLACING THE ADJUSTABLE CABLE STOP :

- 1 Loosen the cable clamp screw using the 4 mm Allen wrench and remove the brake cable.
- 2 Loosen the adjustable cable stop.
- 3 Replace the adjustable cable stop and the brake cable stop.
- 4 Grease the thread on the adjustable cable stop.
- 5 Install the brake of the adjustable cable stop in the caliper groove.
- 6 Tighten the adjustable cable stop so it is in contact with the adjustable cable stop brake.
- 7 Install the brake cable and tighten the cable clamp screw using the 4 mm Allen wrench.

**Torque : 7 - 9 Nm.**