




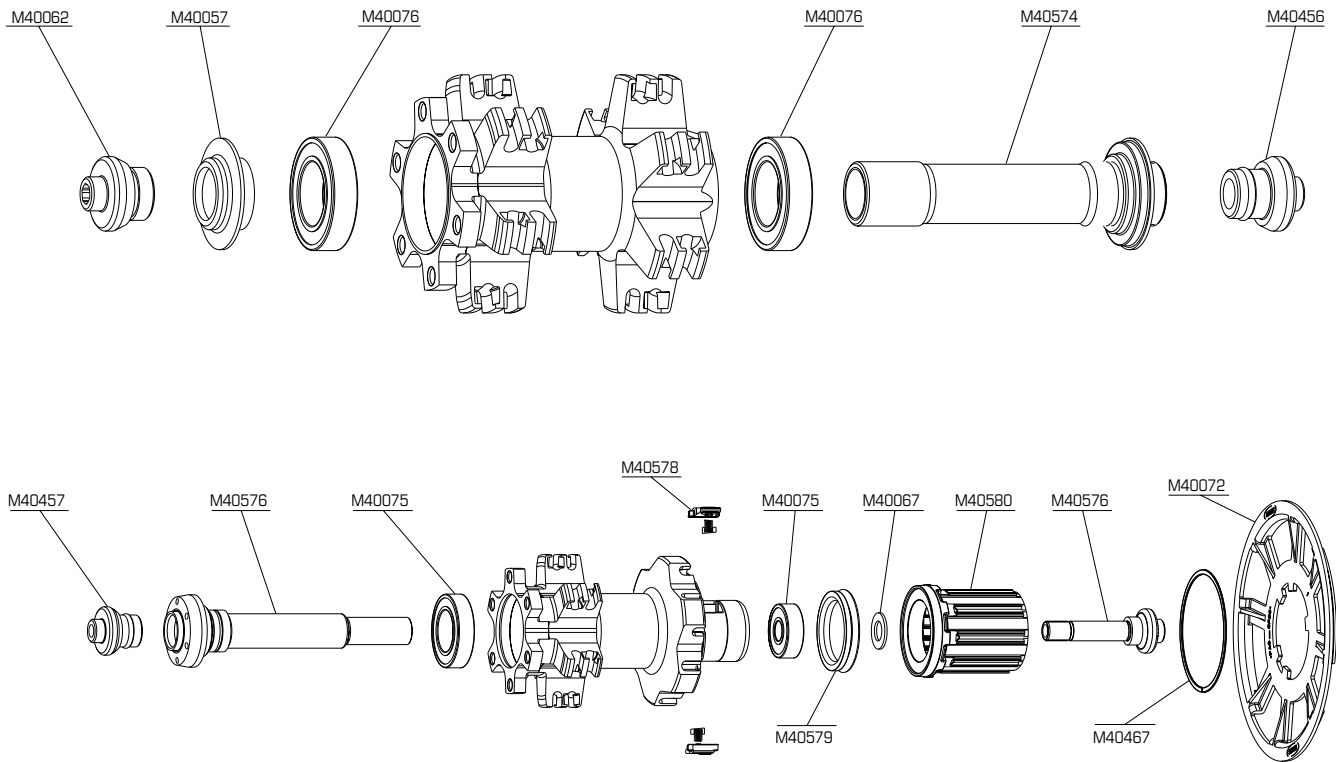
Use : **To be used only with Tubeless UST[®] tires on a cross country mountain bike equipped with disc brakes.** The use of any other type of tire, Cantilever or V-brakes brakes, or any other use (such as on a tandem, or in downhill disciplines...) is inadvisable and is the sole responsibility of the user, which voids the Mavic warranty.

WHEEL WEIGHT WITHOUT SKEWER :
 FRONT : 795 g.
 REAR : 930 g.
 WHEEL REFERENCE :
 FRONT : M24000.
 REAR : M24001.

RIM

COMMERCIAL REFERENCES	Ø VALVE HOLE	RECOMMENDED TIRE WIDTH AND PRESSURE	MAINTENANCE AND BRAKES
Front : M40581 Rear : M40582		 Ø 26" : Compatible ETRTO 559 x 19 Tubeless UST[®] only.	Maintenance : see page 28. Brakes : see page 30.
Available through the MSC.	Valve UST [®] M40495 Ø 6,5 mm or Ø 8,5 mm with adapter.	 2 - 4 bars (30 - 60 PSI). Tubeless UST[®] only.	Replacing the rim : see pages 25 & 26.

HUBS



MAINTENANCE : Cleaning : Use a dry cloth or soap and water.
 Do not use pressurized water. Maintenance : see page 15, 17, 18 & 19.

WHEEL BUILDING

FEATURES	TENSION	MAINTENANCE
QUANTITY PER PACKAGE : 12 Zicral spokes with anti-rotation system. SPOKES : Length and reference : Front / Left rear : M40585. Right rear : M40586. LACING PATTERN : Front : 3 cross pattern. Rear : 3 cross pattern.	Front : 110 - 140 kg. Right rear : 120 - 150 kg.	Lateral and radial truing : see page 20. Replacing the spokes : see page 21.

ACCESSORIES

WHEEL DELIVERED WITH :

- Quick release skewer Mavic BX 601 Composite : M40140.
- Quick release rear skewer Mavic BX 601 Composite : M40141.
- Chain Disc : M40072.
- Free play adjustment wrench : M40123.
- Valve UST[®] : M40495.
- Spoke tension and maintenance wrenches (delivered with the rear wheel) : M40494.
- Instructions and warranty card.