

USE : to be used only on a mountain bike. Any other use (such as on a tandem or in "downhill" disciplines...) is inadvisable and is the sole res

## RIM

### Commercial references and features

|                         |             |   |
|-------------------------|-------------|---|
| Front                   | Rear        | <ul style="list-style-type: none"> <li>• High resistance aluminum alloy.</li> <li>• MAVIC bronze anodization</li> <li>• Stainless steel double eyelet's.</li> </ul>                         |
| M40102                  | M40103      |   |
| Available at the M.S.C. |             | <ul style="list-style-type: none"> <li>• SUP - UB CONTROL</li> </ul>  |
|                         |             | <ul style="list-style-type: none"> <li>• Drilling :                             <ul style="list-style-type: none"> <li>- Front : 26 holes</li> <li>- Rear : 28 holes</li> </ul> </li> </ul> |
| M40167                  | 22 X 559 mm |   |

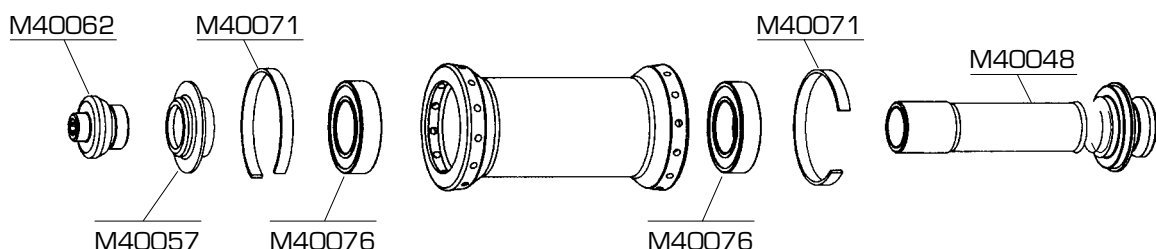


## Rim tape

## HUB

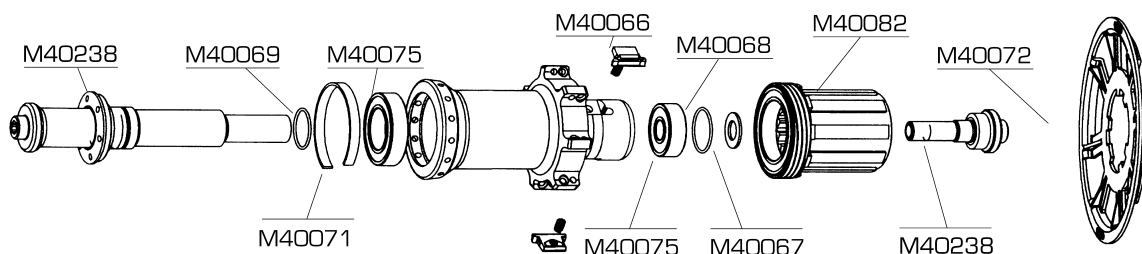
### Front hub :

Hardened, anodized aluminum alloy body. Adjustable, replaceable sealed cartridge bearings. Oversized, thin walled aluminum alloy axle. Spoke head rings to prevent a broken spoke from entering the hub. Spacing : 100 mm.



### Rear hub :

Hardened, anodized aluminum alloy body. Integrated free wheel with FTS system. Adjustable, replaceable sealed cartridge bearings. Steel free wheel body compatible with 8 speed HG (11 teeth). Oversized, thin walled aluminum alloy axle. Spoke head rings to prevent a broken spoke from entering the hub. Spoke protector. Spacing : 135 mm.



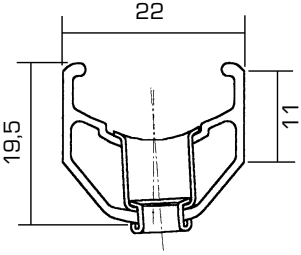

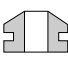
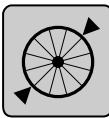
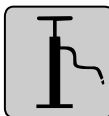
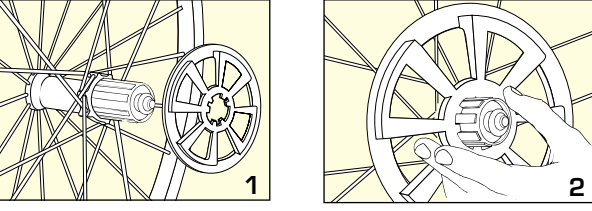
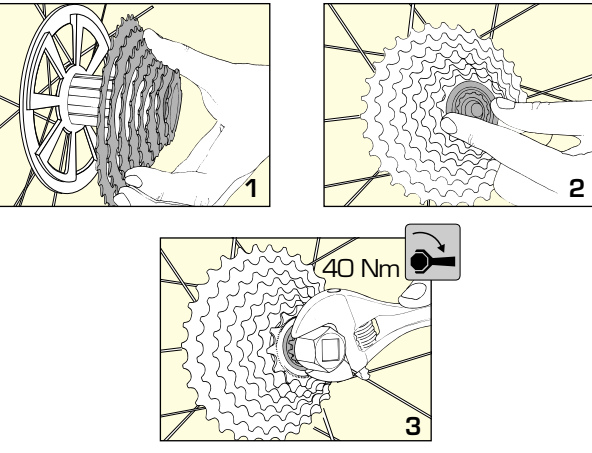
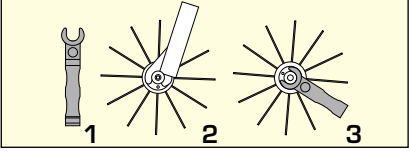
## NIPPLES AND SPOKES

|  |            |                                 |  |
|--|------------|---------------------------------|--|
| Quantity per package :<br>10 spokes + 10 nipples |            | N<br>i<br>p<br>p<br>l<br>e<br>s | <ul style="list-style-type: none"> <li>• Nickel-plated brass spoke nipples.<br/>Length : 12 mm.</li> </ul> |
| Front/Rear Left                                  | Rear Right |                                 | S<br>p<br>o<br>k<br>e<br>s   |
| M40022   | M40023     |                                 |  |

Wheel weight without skewer - Front : 730 left - Rear : 930 left

ole responsibility of the user, which voids the MAVIC warranty.

MOUNTAIN BIKE WHEELS

| Section of the rim   |                                   | Ø Valve hole  | Section of the tire and recommended pressure   | Maintenance and brakes   |
|--|-----------------------------------|---|--|--|
|                                  |                                   | Ø 8,5 mm<br><br>With reducer Ø 6,5 mm<br>   |  Ø 26"<br>Compatible ETRTO<br>559 X 17<br>Section : 1,5" - 2,1"<br> MAX : 5 BAR 90 PSI<br>MIN : 2 BAR 30 PSI | Maintenance :<br>see pages 44 & 45.<br>Brakes : see pages 44 & 45.   |
| Installing the components  |                                   | Adjusting the bearings  |  | Maintenance  |
| <b>Spoke protector</b><br>      |                                   | Fasten the wheel to the frame :<br>1- If there is free play : slightly tighten the bearing adjustment nut with the tool provided (delivered with the wheel) checking the free play at the top of the wheel.<br>2- If there are tight bearings : loosen the bearing adjustment nut about 1/2 turn, unfasten the wheel, remove it from the frame and remove the skewer. Lightly hit the bearing adjustment nut side of the axle with a mallet until the axle rotates freely, refasten the wheel to the frame and adjust it as previously described.<br><i>The hub of a CROSSLAND® wheel is pre-adjusted at the factory for optimum use and long life. However, free play can be modified. Free play mis-adjustments can damage the bearings on the CROSSLAND® wheel or permanently alter their performance.</i> |  | Cleaning : Use a dry cloth or soap and water.<br>Éviter le lavage haute pression.<br>Maintenance :<br>see pages 35 - 38. |
| <b>8 speed HG cassette</b><br> |                                   |   |  |  |
| Lacing pattern   |                                   | Tension   |  | Maintenance  |
| Front/Rear Left<br><br>Radial  | Rear Right<br><br>3 Cross pattern | Front/Rear Right<br><br>90 - 110 daN  |  | Lateral and radial truing :<br>see page 34.<br>Replacing the spokes :<br>see pages 32 - 33.                              |